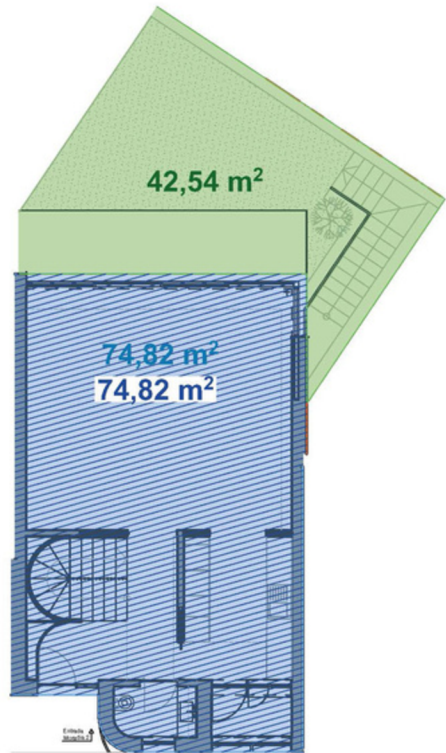
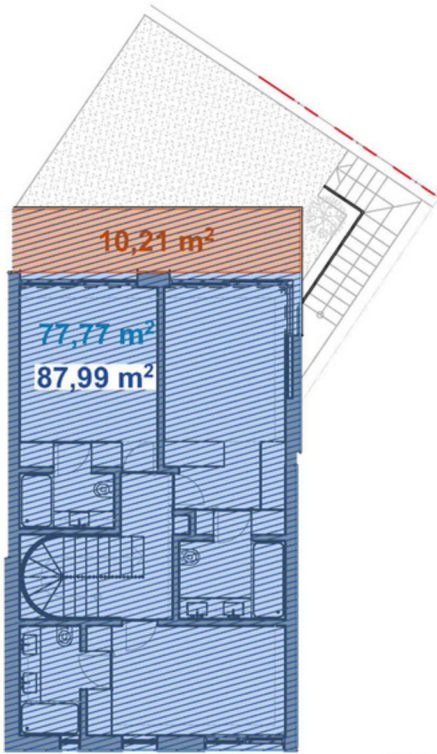


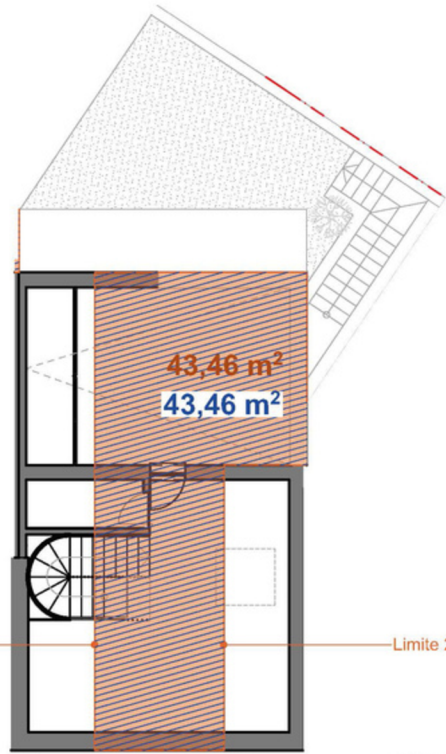
01. Piso Cave 1:150



02. Piso 00 1:150



03. Piso 01 1:150

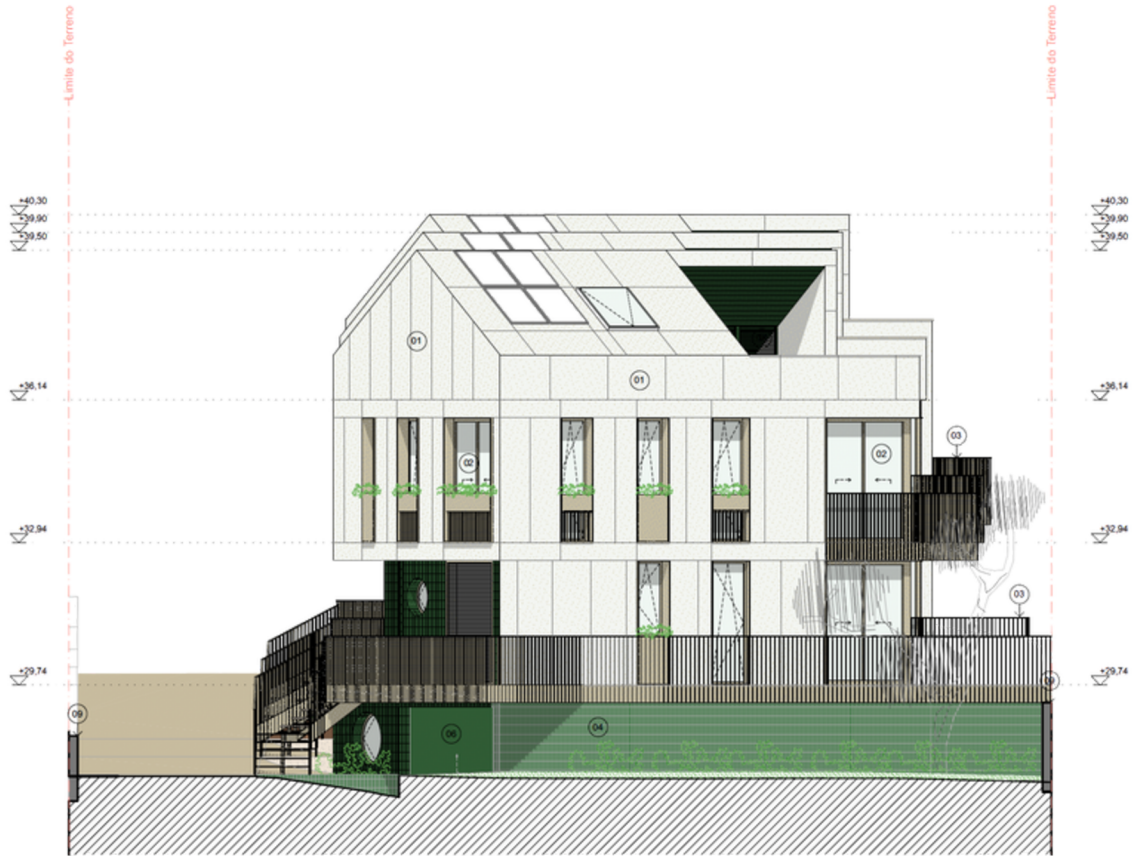


04. Piso Sótão 1:150

VILLA 02  
**Morada 2**

A+ARCHITECTURE © all rights reserved  
To be used for illustrative purposes only

<p><span style="color: blue;">■</span> Área Bruta Construção Privativa</p> <p>Piso Cave = 0 m<sup>2</sup> Piso 00 = 74,82 m<sup>2</sup> Piso 01 = 77,77 m<sup>2</sup> Piso Sótão = 0 m<sup>2</sup></p> <p><b>Total = 152,59 m<sup>2</sup></b></p>	<p><span style="color: orange;">■</span> Área Total Dependente</p> <p>Piso Cave = 79,92 m<sup>2</sup> Piso 00 = 0 m<sup>2</sup> Piso 01 = 10,21 m<sup>2</sup> Piso Sótão = 43,46 m<sup>2</sup></p> <p><b>Total = 133,59 m<sup>2</sup></b></p>	<p><span style="color: blue; border-bottom: 1px dashed blue;">/</span> Área Comercial</p> <p>Piso Cave = 0 m<sup>2</sup> Piso 00 = 74,82 m<sup>2</sup> Piso 01 = 87,99 m<sup>2</sup> Piso Sótão = 43,46 m<sup>2</sup></p> <p><b>Total = 206,27 m<sup>2</sup></b></p>	<p><span style="color: green;">■</span> Área Logradouro</p> <p>Piso 00 = 42,54 m<sup>2</sup></p> <p><span style="color: blue; border: 1px solid blue;">■</span> Área Bruta de Construção</p> <p>152,59 + 133,59 = <b>286,18 m<sup>2</sup></b></p>
---	---	--	---



ALÇADO NOROESTE



ALÇADO SUDESTE



GREENVILLE  
ESTORIL



ALÇADO SUDOESTE



ALÇADO NORDESTE

A RESIDENTIAL PROPOSAL WITH A BOLD AND REFINED ARCHITECTURAL LANGUAGE  
PROMOTED BY MY PORTUGAL REAL ESTATE